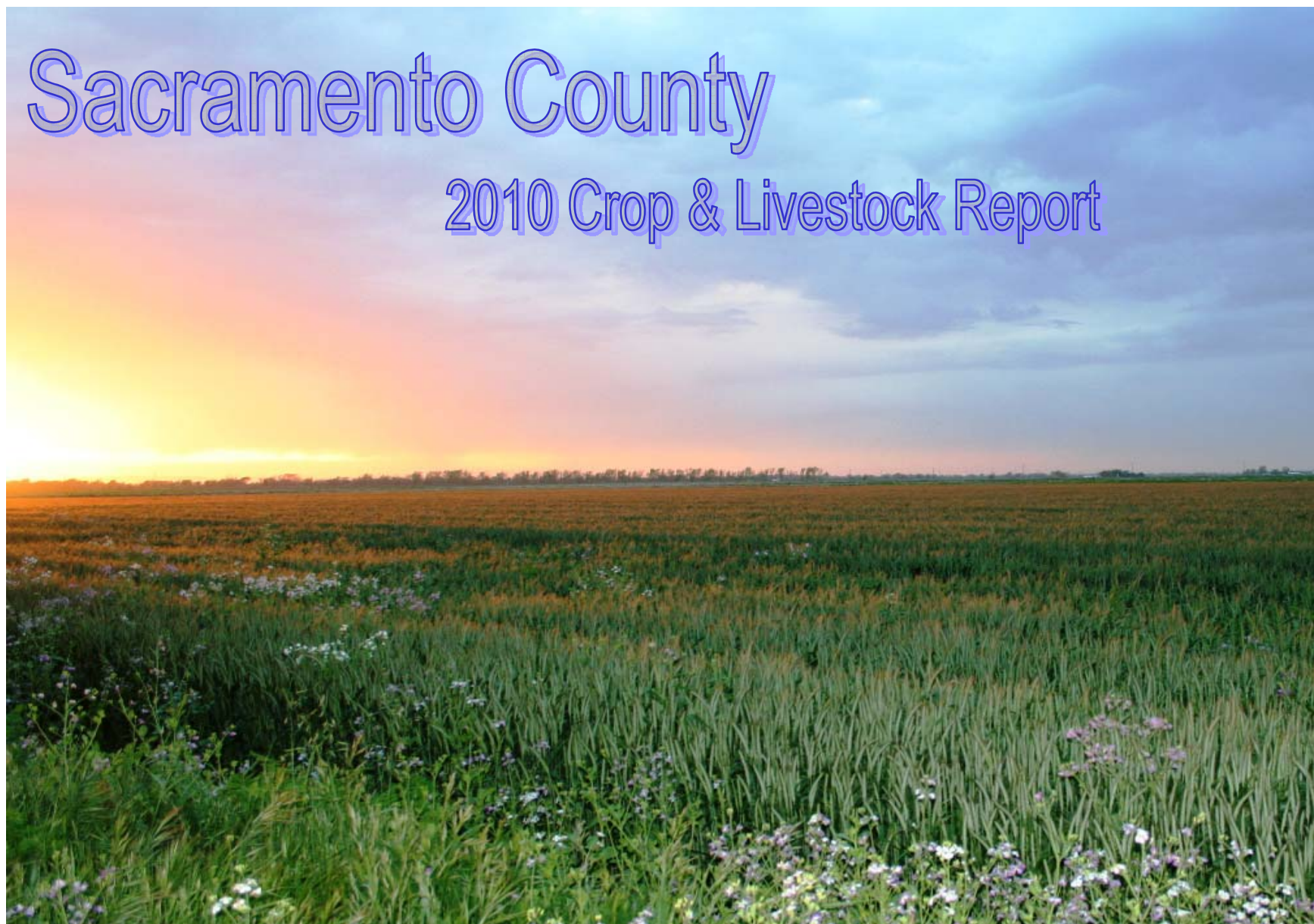


# Sacramento County

## 2010 Crop & Livestock Report







**Agricultural Commissioner/  
Director of Weights & Measures**

Frank E. Carl, Director

## County of Sacramento

---

---

June 14, 2011

KAREN ROSS, SECRETARY  
California Department of Food and Agriculture

THE HONORABLE BOARD OF SUPERVISORS  
County of Sacramento

In accordance with the provisions of Section 2279 of the California Food and Agricultural Code, it is my pleasure to submit the 2010 Sacramento County Crop and Livestock Report. The report represents estimated values based upon the most common first point of sale of the commodity produced. Total 2010 crop production value of \$355,943,000 represents a MODEST 2% increase above last year's values.

Wine grapes again lead Sacramento County production values at \$92.56 million, a slight reduction from the previous year even though production was up. Prices received by producers for varieties were somewhat less than the previous year, and even though yields were increased, there was an almost 500 acre reduction in harvested grapes. The wine grape market continues to be volatile, but Delta grapes continue to provide what the consumer seems to want in a low to mid price range, quality product.

Milk production remains as the number two commodity and recovered well from the sharp declines experienced in 2009. The dairy industry continues to struggle with high feed prices and oversupply of milk products in an extremely competitive market place.

Sacramento County continues to lead the state in Bartlett Pear production. Prices were up sharply as a result of continued international supply shortages while production was strong here, resulting in pears continuing in the number 3 production value in the county at \$39.2 million.

Nursery production improved slightly from the previous year as producers adjust to the changing market place as a result of the struggling economy. Nursery production in Sacramento County was \$29.925 million in 2010, up more than \$1.4 million from the previous year.

Completing the top five, Poultry production was down 23.5% from last year's record setting pace. Total poultry production value in the county was \$26.65 million.

The report includes a section on pest exclusion and detection activities that this office performs on a routine basis. While the program continues to be a huge success in the numbers of pests we stop at the receiving station, we had more detection finds in the field last year than any year in memory. We had an oriental fruit fly quarantine, resulting in a treatment program that successfully eradicated the infestation. We also dealt with Japanese beetle, peach fruit fly, and light brown apple moth. These pests continue to beat at the county door every year. It is our job, and yours, to keep them out.

Tassie, our detector dog met the mandatory age of retirement last summer at age nine. After seven years productive service for USDA, Homeland Security and Border Protection and finally with Sacramento County, she retired to a nice home where she can enjoy being pampered for the rest of her days. Her replacement, Roxie, has been on the job since January and continues the tradition of excellence.

I would like to express my thanks to the many producers in Sacramento County who provide the information for this report. I also appreciate the efforts of my staff, particularly Laura McCready and Ramona Saunders for compiling the report and Vicki Brewer for producing it. Thank you for the opportunity to work with all of you for the past twenty-one years.

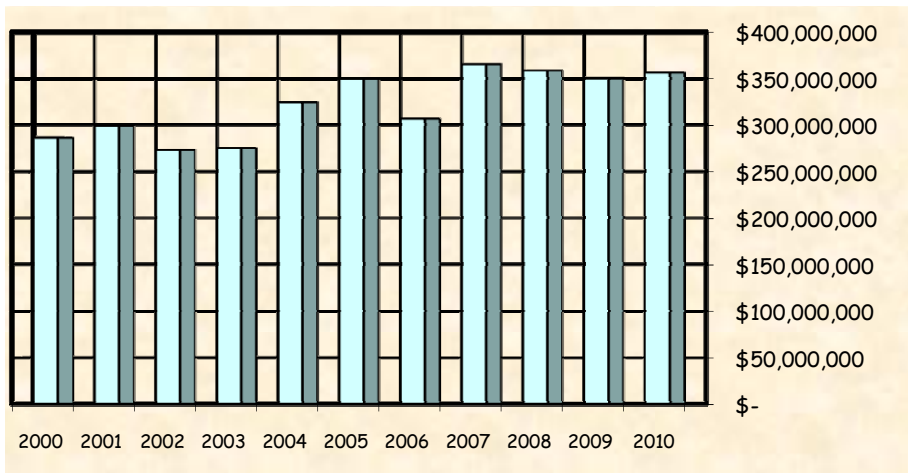
Respectfully submitted,

A handwritten signature in blue ink, appearing to read 'F. Carl'.

Frank E. Carl  
Agricultural Commissioner

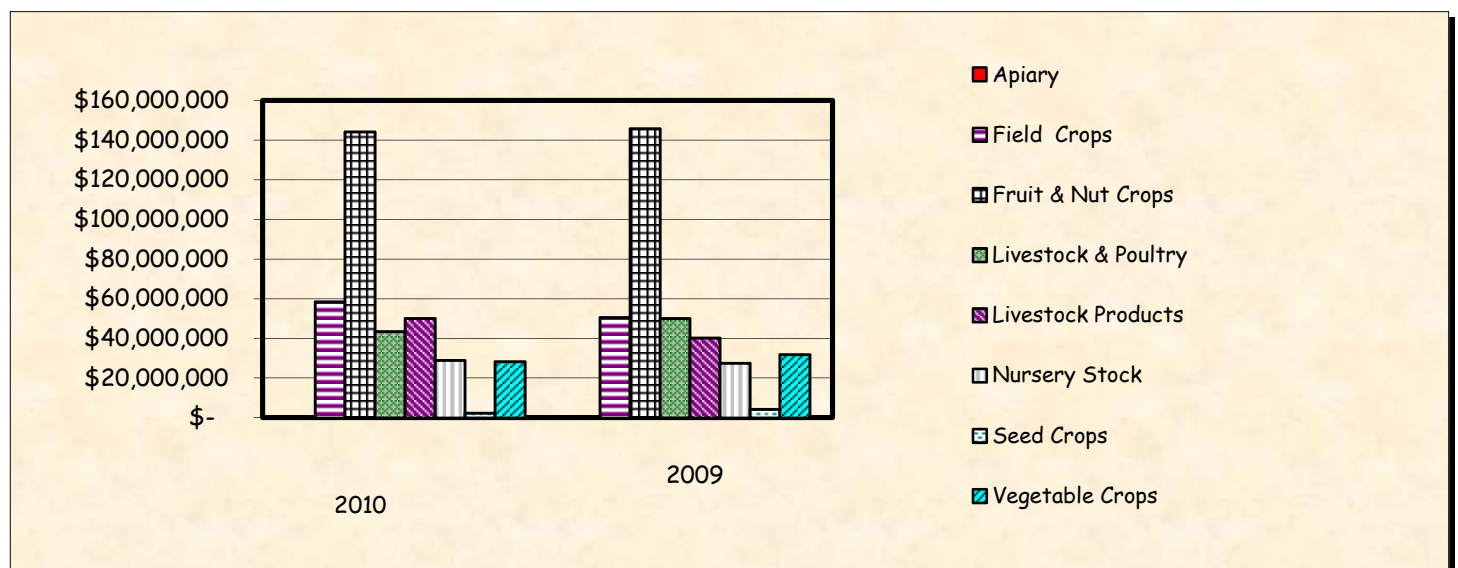
## GROSS VALUE OF AGRICULTURAL PRODUCTION 2000 - 2010

2010	\$	355,943,000
* 2009	\$	350,475,000
2008	\$	358,280,000
2007	\$	364,859,000
2006	\$	306,487,000
2005	\$	348,885,000
2004	\$	324,168,000
2003	\$	274,900,000
2002	\$	272,674,000
2001	\$	298,719,000
2000	\$	286,231,000



### SUMMARY OF PRODUCTION

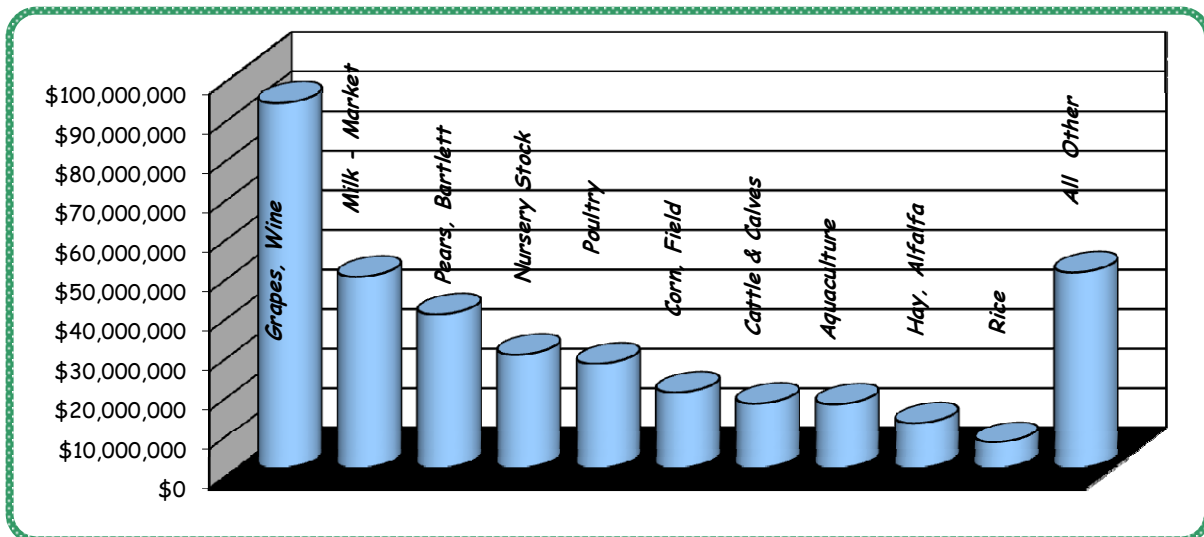
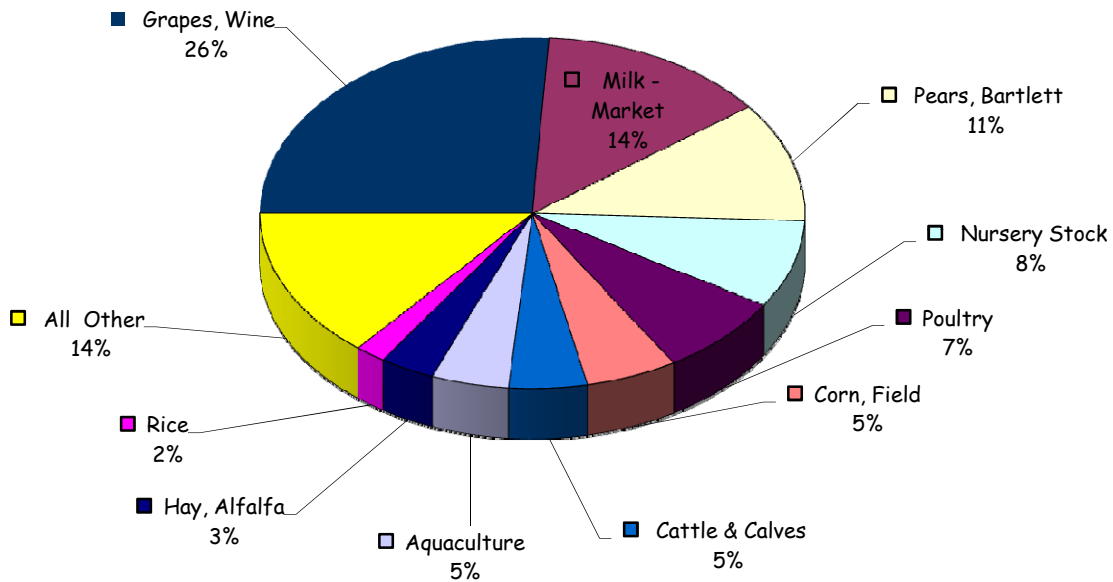
	2010 Value of Production		2009 Value of Production	
Apiary	\$	3,000	\$	90,000
Field Crops	\$	58,543,000	\$	50,663,000
Fruit & Nut Crops	\$	144,270,000	\$ *	145,850,000
Livestock & Poultry	\$	43,467,000	\$	50,147,000
Livestock Products	\$	50,149,000	\$	40,261,000
Nursery Stock	\$	28,925,000	\$	27,494,000
Seed Crops	\$	2,275,000	\$	4,183,000
Vegetable Crops	\$	28,311,000	\$	31,787,000



\*Revised

# THE TEN LEADING FARM COMMODITIES - 2010

Grapes, Wine	\$92,556,000
Milk - Market	48,631,000
Pears, Bartlett	39,159,000
Nursery Stock	28,925,000
Poultry	26,648,000
Corn, Field	19,369,000
Cattle & Calves	16,539,000
Aquaculture	16,343,000
Hay, Alfalfa	11,549,000
Rice	6,480,000
All Other	49,744,000



## FIELD CROPS

Item	Year	P R O D U C T I O N				V A L U E	
		Harvested Acreage	Per Acre	Total	Unit	Per Unit	Total
<b>Corn, Field</b>	<b>2010</b>	<b>22,850</b>	<b>5.1</b>	<b>116,540</b>	<b>TON</b>	<b>166.20</b>	<b>19,369,000</b>
	2009	18,988	5.0	94,940	TON	160.40	15,228,000
<b>Corn, Silage</b>	<b>2010</b>	<b>8,698</b>	<b>23.3</b>	<b>202,660</b>	<b>TON</b>	<b>23.70</b>	<b>4,803,000</b>
	2009	9,721	27.6	268,300	TON	25.40	6,815,000
<b>Hay, Alfalfa</b>	<b>2010</b>	<b>16,005</b>	<b>6.0</b>	<b>96,000</b>	<b>TON</b>	<b>120.30</b>	<b>11,549,000</b>
	2009	16,218	5.2	84,300	TON	98.20	8,278,000
<b>Hay, Grain</b> (Oat, rye, triticale and	<b>2010</b>	<b>1,126</b>	<b>2.8</b>	<b>3,150</b>	<b>TON</b>	<b>80.60</b>	<b>254,000</b>
	2009	4,883	3.4	16,600	TON	61.60	1,023,000
<b>Hay, Other</b> (Clover, Sudan, grass, and pasture)	<b>2010</b>	<b>2,536</b>	<b>4.3</b>	<b>10,900</b>	<b>TON</b>	<b>105.30</b>	<b>1,148,000</b>
	2009	3,716	3.0	11,150	TON	66.10	737,000
<b>Oats</b>	<b>2010</b>	<b>3,264</b>	<b>3.3</b>	<b>10,770</b>	<b>TON</b>	<b>81.80</b>	<b>881,000</b>
	2009	5,680	3.2	18,180	TON	53.00	964,000
<b>Oat, Silage</b>	<b>2010</b>	<b>5,656</b>	<b>16.8</b>	<b>95,020</b>	<b>TON</b>	<b>20.70</b>	<b>1,967,000</b>
	2009	see misc.					
<b>Pasture Irrigated</b>	<b>2010</b>	<b>17,800</b>			<b>ACRE</b>	<b>125.00</b>	<b>2,225,000</b>
	2009	17,800			ACRE	125.00	2,225,000



Photo by: Lisa Arbegast, Sr Ag & Standards Inspector

# FIELD CROPS

continued



## PRODUCTION

## VALUE

Item	Year	Harvested Acreage	Per Acre	Total	Unit	Per Unit	Total
<b>Range</b>	<b>2010</b>	<b>61,100</b>			<b>ACRE</b>	<b>\$ 22.00</b>	<b>\$ 1,344,000</b>
	2009	61,100			ACRE	\$ 22.00	\$ 1,344,000
<b>Rice</b>	<b>2010</b>	<b>4,184</b>	<b>3.7</b>	<b>15,480</b>	<b>TON</b>	<b>★ 418.60</b>	<b>6,480,000</b>
	2009	3,120	4.1	12,790	TON	★ 441.60	5,648,000
<b>Ryegrass</b>	<b>2010</b>	<b>2,416</b>	<b>3.1</b>	<b>7,490</b>	<b>TON</b>	<b>67.6</b>	<b>506,000</b>
	2009	see - Hay, Grain		-	TON		-
<b>Safflower</b>	<b>2010</b>	<b>1,581</b>	<b>1.0</b>	<b>1,580</b>	<b>TON</b>	<b>327.00</b>	<b>517,000</b>
	2009	2,321	1.2	2,790	TON	299.20	835,000
<b>Wheat</b>	<b>2010</b>	<b>11,423</b>	<b>2.8</b>	<b>31,980</b>	<b>TON</b>	<b>162.60</b>	<b>5,200,000</b>
	2009	12,940	2.2	28,470	TON	159.90	4,552,000
<b>Misc. Field</b>	<b>2010</b>	<b>3,696</b>	Barley, dry beans, sorghum milo, sunflower, triticale, and organic: dried beans, dried peas, sunflower and rice				<b>2,300,000</b>
	2009	5,658	Barley, dry beans, misc. silage, soybean, sunflower, and organic: dried beans, dried peas, sunflower and rice				3,014,000
<b>Total</b>	<b>2010</b>	<b>162,335</b>				<b>\$</b>	<b>58,543,000</b>
	2009	162,145				\$	50,663,000

★ includes government payment to maintain reporting consistency between counties



Above Photo by: Lisa Arbegast, Sr Ag & Standards Inspector  
 Botton Photo by: Laura McCreedy, Sr Ag & Standards Inspector



## FRUIT AND NUT CROPS

Item	Year	PRODUCTION				VALUE		
		Harvested Acreage	Per Acre	Total	Unit	Per Unit	Total	
Apples	2010	347	14.3	4,962	TON	\$ 205.50	\$ 1,020,000	
	2009	370	11.8	4,366	TON	\$ 183.30	\$ 800,000	
Cherries	2010	1,205	1.5	1,808	TON	1,580.60	2,857,000	
	2009	1,233	1.7	2,096	TON	2,931.40	6,145,000	
Grapes, Wine	2010	24,595	8.4	206,598	TON	448.00	92,556,000	
	2009	25,110	7.6	190,836	TON	495.50	94,559,000	
Pears	2010	5,401	21.2	114,501	TON	342.00	39,159,000	
	* 2009	5,455	25.3	138,012	TON	224.00	30,915,000	
Strawberries	2010	80.0	3.3	264	TON	3,360.00	887,000	
	2009	95.0	5.2	494	TON	3,000.00	1,482,000	
Walnuts	2010	837.0	1.6	1,339	TON	1,579.00	2,115,000	
	2009	see misc.						
Miscellaneous	2010	987	Almonds, apricots, blackberries, blueberries, cantaloupe, chestnuts, citrus, table grapes, kiwis, melons, nectarines, olives, oranges, peaches, pecans, pistachios, plums, pomegranates, tangerines, watermelons, and organic: apples, asian pears, cherries, asst. citrus, figs, grapes, guavas, jujubes, loquats, olives, pears, pecans, persimmons, pistachios, pomegranates, misc stone fruits, strawberries, and walnuts				5,676,000	
	2009	1,393	Almonds, apricots, blackberries, blueberries, chestnuts, citrus, table grapes, kiwis, melons, nectarines, olives, peaches, pecans, pistachios, plums, walnuts and organic: apples, asian pears, cherries, asst. citrus, figs, grapes, guavas, jujubes, loquats, olives, pears, pecans, persimmons, pistachios, pomegranates, misc. stone fruits, strawberries, walnuts				11,949,000	
Total	2010	33,452					\$ 144,270,000	
	2009	33,656					\$ 145,850,000	



Top photo by: Randon Krieg, Sr Ag & Standards Inspector  
 Bottom photo by: Laura McCreedy, Sr Ag & Standards Inspector

\* Revised



## LIVESTOCK AND POULTRY

Item	Year	PRODUCTION			VALUE		
		No. of Head	Liveweight	Unit	Per Unit	Total	
Cattle & Calves	2010	28,070	176,054	CWT	\$ 93.94	\$ 16,539,000	
	2009	27,577	170,468	CWT	\$ 87.86	\$ 14,977,000	
Aquaculture	2010					16,343,000	
	2009					14,704,000	
Poultry	2010	Chickens (roasters, fryers and custom) and Turkeys				26,648,000	
	2009	Chickens (roasters, fryers and custom) and Turkeys				34,813,000	
Livestock Other	2010	Hogs & pigs, goats, and sheep				280,000	
	2009	Hogs & pigs, goats, and sheep				357,000	
Total	2010				\$	43,467,000	
	2009				\$	50,147,000	



Photos by: Ed Williams, CDFA Liaison

## LIVESTOCK PRODUCTS

Item	Year	P R O D U C T I O N		V A L U E	
		Production	Unit	Per Unit	Total
<b>Milk-Market</b>	<b>2010</b>	<b>3,220,598</b>	<b>CWT</b>	<b>\$ 15.10</b>	<b>\$ 48,631,000</b>
	2009	3,280,535	CWT	\$ 11.83	\$ 38,809,000
<b>Milk-Manufacturers</b>	<b>2010</b>	<b>93,042</b>	<b>CWT</b>	<b>14.58</b>	<b>1,357,000</b>
	2009	98,177	CWT	12.04	1,182,000
<b>Miscellaneous</b>	<b>2010</b>	wool and poultry manure			<b>161,000</b>
	2009	wool and poultry manure			270,000
<b>Total</b>	<b>2010</b>				<b>\$ 50,149,000</b>
	2009				\$ 40,261,000

## APIARY PRODUCTS

V A L U E

<b>Apiary</b>	<b>2010</b>	Honey and pollination	<b>\$3,000</b>
<b>Products</b>	2009	Honey and pollination	\$90,000



Photo by: Lisa Arbegast, Sr Ag & Standards Inspector



## SEED CROPS

Item	Year	PRODUCTION			VALUE		
		Harvested Acreage	Per Acre	Total	Unit	Per Unit	Total
Clover	2010	1,240	472.0	585,300	LB	2.00	1,171,000
	2009	see misc.					
Sudan	2010	682	2363.0	1,611,600	LB	0.35	564,000
	2009	2,004	2498.0	5,006,000	LB	0.43	2,153,000
Miscellaneous	2010	219	Alfalfa, barley, broccoli, carrot, corn, cucumber, melon, onion, pepper, pumpkin, squash, turnip, and watermelon				540,000
	2009	1,964	Alfalfa, barley, bean, clover, corn, cucumber, melon, oat, onion, squash, and watermelon				2,030,000
Total	2010	2,141					\$2,275,000
	2009	3,968					\$4,183,000

## NURSERY STOCK

Item	Year	Harvested Acreage		Value
Nursery Stock	2010	* 522	Ornamental trees and shrubs, christmas trees, and turf grass	\$ 28,925,000
	2009	* 471.5	Ornamental trees and shrubs, christmas trees, and turf grass	\$ 27,494,000
Total	2010	* 522		\$ 28,925,000
	2009	* 471.5		\$ 27,494,000

\*Amount reported



Photos by: Laura McCready, Sr Ag & Standards Inspector



## VEGETABLE CROPS

Item	Year	PRODUCTION				VALUE	
		Harvested Acreage	Per Acre	Total	Unit	Per Unit	Total
<b>Pumpkins</b>	<b>2010</b>	<b>275</b>	<b>13.2</b>	<b>3,630</b>	<b>TON</b>	<b>145.30</b>	<b>527,000</b>
	2009	286	4.8	1,359	TON	205.00	278,000
<b>Squash</b>	<b>2010</b>	<b>254</b>	<b>14.0</b>	<b>3,556</b>	<b>TON</b>	<b>140.00</b>	<b>498,000</b>
	2009	297	10.0	2,970	TON	528.00	1,568,000
<b>Tomatoes, Processed</b>	<b>2010</b>	<b>2,597</b>	<b>38.0</b>	<b>98,686</b>	<b>TON</b>	<b>65.40</b>	<b>6,454,000</b>
	2009	3,359	36.6	122,939	TON	80.90	9,946,000
<b>Miscellaneous</b>	<b>2010</b>	<b>3,707</b>	Artichokes, asparagus, beans, beets, broccoli, cabbage, cauliflower, corn-sweet, cucumbers, dill, eggplants, gourds, mustard, okra, green onions, peas, peppers, potatoes, squash, tomatillos, fresh tomatoes, misc veggies, yams, and organic vegetables				<b>20,832,000</b>
	2009	2,842	Artichokes, asparagus, misc. beans, beets, cantaloupe, corn-sweet, cucumbers, dill, eggplants, gourds, misc. greens, okra, onions, onions-green, peas, peppers, potatoes, squash, tomatoes-fresh, watermelon, and organic vegetables				19,995,000
<b>Total 2010</b>		<b>6,833</b>					<b>\$ 28,311,000</b>
2009		6,784					\$ 31,787,000



Photos by: Laura McCready, Sr Ag & Standards Inspector

---

## PEST EXCLUSION / PLANT QUARANTINE

---

In 2010, Sacramento County agricultural inspectors made 2,595 visits to receivers of goods potentially infested with non native pests. These receivers include express carriers, wholesale florists, nurseries, aquatic supply stores and many more.

When Pests are intercepted, they are sent to the California Department of Food and Agriculture Plant and Pest Diagnostic Laboratory. There, they are identified and rated as to their ability to cause economic harm to the environment. An "A" rating is given to organisms of known economic importance; subject to eradication, containment, or rejection. "Q" rated organisms are suspected of being economically important but a permanent rating has not been established. They are treated as "A" rated pests and rejected.

Pests intercepted in Sacramento County in 2010 included the following

Scientific Name	Common Name	Rating	Origin of Shipment
<i>Acharia stimulea</i>	Saddleback caterpillar	Q	Mexico
<i>Agallia sp.</i>	Leafhopper	Q	Hawaii
<i>Aleurodicus dispersus</i>	Spiraling Whitefly	Q	Hawaii
<i>Anthonomus sp.</i>	Weevil	Q	Hawaii
<i>Aonidiella aurantii</i>	California Red Scale	B	
<i>Bactrocera dorsalis</i>	Oriental Fruit Fly	A	
<i>Bactrocera zonata</i>	Peach Fly	A	
<i>Carot sp.</i>	invasive weed	Q	Oregon
<i>Cirsium arvense</i>	Canada Thistle	B	Oregon
<i>Cuscuta cf. japonica</i>	Japanese Dodder	A	
<i>Diptera Syrphidae</i>	Predatory Larvae	Q	Hawaii
<i>Egeria najas</i>	Narrow Leaf Anacharis	Q	Hawaii

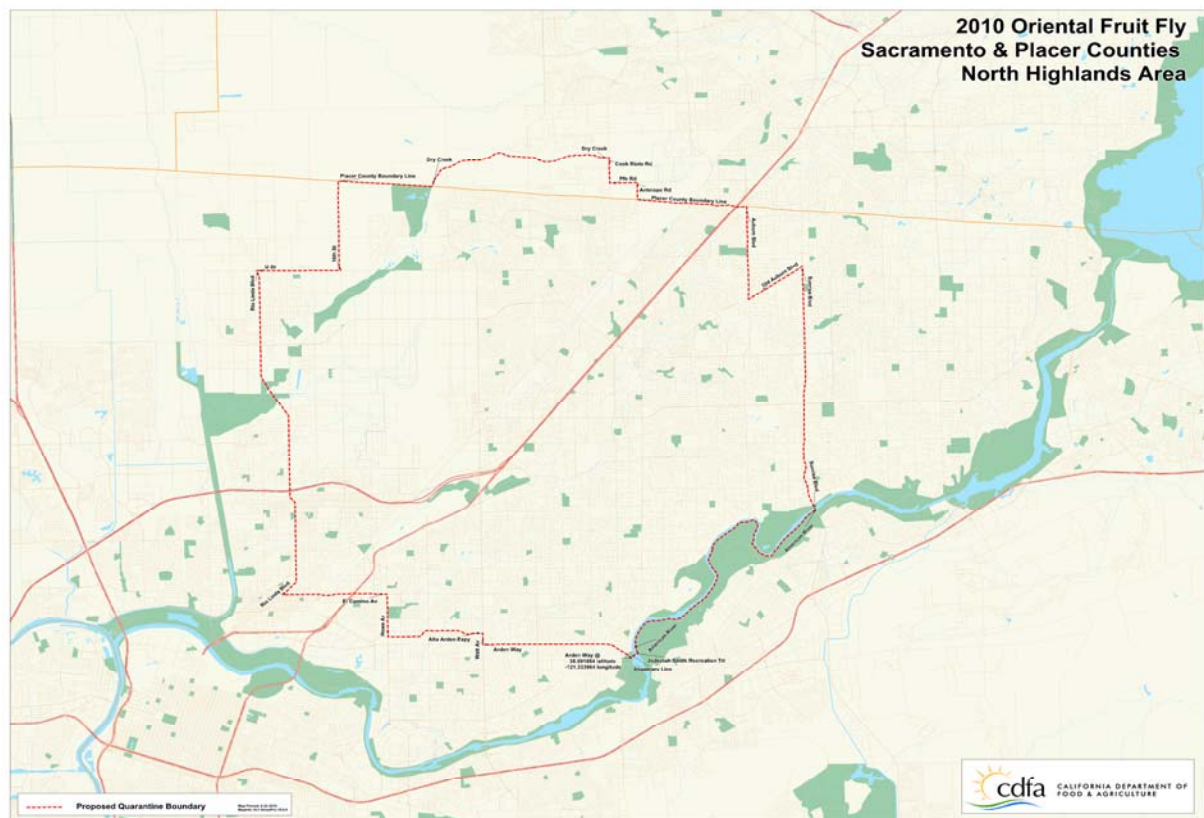
---

## PEST DETECTION / SPECIAL SURVEYS

---

**Fruit Fly Find Triggers Quarantine in North Highlands** – A lone mated female Oriental Fruit Fly was found in a detection trap in the North Highlands area of Sacramento County in June of 2010. Because the find indicated that there was a breeding population present, a quarantine was imposed and pesticide treatments were prescribed. Properties close to the find site received a ground spray of spinosad while insecticide bait stations were distributed over a 9 square mile area.

Though the area under quarantine was mostly urban residential properties, some smaller growers and farmers markets were affected. Growers of host fruit originating within the quarantine boundaries were required to treat their produce weekly for 30 days before it could leave the quarantine area. Farmer's Markets and outdoor vendors were required to safeguard fruit and vegetables while displayed with screens or plastic to avoid fruit fly eggs being laid in host fruit. Hundreds of additional traps were deployed in the area but no further fly finds were made. The quarantine was lifted from the area in November 2010.



**Lone Japanese Beetle Trapped in Fair Oaks** – One single female Japanese beetle was trapped at a residence in Fair Oaks in August 2010. In response, the California Department of Agriculture (CDFA) placed hundreds of additional traps in the area surrounding the find to determine if a breeding population existed. Japanese beetle is not native to the United States but was accidentally introduced to the eastern states from Japan around 1917. Increased trapping levels will continue for 2 more years to monitor the area.

**Peach Fruit Fly detected in South Sacramento** – One male Peach Fruit Fly was discovered in South Sacramento in a detection trap. *Bactrocera zonata* is known in India and Southeast Asia as a serious pest of tropical and subtropical fruits. It is one of the three most destructive flies in India, causing crop losses of 25 to 100 percent in peach, apricot, guava and figs. Damage to the fruit is similar to that caused by the Mediterranean fruit fly and the Melon fly. It has been reared from 33 different types of fruits, a number of which are important commercial crops. It lowers the yield and quality of such fruits as mango, guava, citrus, eggplant, tomato, apple, peach and loquat. In response to the find, hundreds of additional traps were deployed to determine if a breeding population exists. Traps will be monitored until early summer 2011.

# FARMERS MARKET

There are 16 registered organic producers that produce 82 different commodities in Sacramento county.

We also have 125 Farmers Market Producers certified in Sacramento County

## SACRAMENTO COUNTY CERTIFIED FARMER'S MARKETS

### 2011 Season Schedule:

#### Every TUESDAY

**Fremont Park**

16th & P Street

10 am to 1:30 pm / May - September

**Roosevelt Park**

9th and P Street

10 am to 1:30 pm / May - September

#### Every WEDNESDAY

**Chavez Plaza**

10th & J Streets

(Front of City Hall)

10 am to 1:30 pm / May - October

**Elk Grove Regional Park**

Elk Grove-Florin Rd

At the South End of Park

4 pm to 7 pm / May - August

#### Every THURSDAY

**Intel**

Intel Parking lot

Folsom, CA

10 am to 2 pm / June 2 - Sept 29th

**Florin Sears**

Florin Rd & 65th Street

Front of Sears - Parking Lot

8 am to Noon / All Year

**Capital Mall Certified Farmers Market**

Capital Mall

Between 6th and 7th Street

10 am to 1:30 pm / May - September

**Galt Certified Farmers Market**

701 C Street

(NW/Lincoln & C Street)

4 pm to 8 pm / May - June

**East End Capital Park**

15th & L Street

10 am to 1:30 pm / June - September

**Oragevale Farmers Market**

Greenback & Walnut

Noon - 6 pm / May - November

#### Every FRIDAY

**Kaiser Permanente Sacramento**

2025 Morse Avenue

9:30 am to 1:30 pm / April 22 - Oct

**St. Rose of Lima Park**

7th & K Street

10 am to 1:30 pm June - September

**Brigg's Ranch**

E Natomas at Blue Ravine

8 am to Noon / June - October 28th

#### Every SATURDAY

**County Club Plaza**

Watt & El Camino

(Butano Dr Parking Lot)

8 am to Noon / All Year

**Inderkum High School**

2500 New Market Drive

Sacramento

9 am to Noon / May - October

**Be Money Smart USA Farmers Mkt**

6196 Sunrise Mall

Citrus Heights

7:30 am to 1 pm / March - January 2012

**Laguna Gateway CFM**

Laguna Gateway Shopping Center

(Front of Petsmart)

8 am to Noon / All Year

**Oak Park Farmers Market**

3500 35th Street

35th Street & 5th Avenue

9 am to 1 pm / May 15 - October

**Sunrise Station Certified Farmers Mkt**

Light Rail Parking Lot

Folsom & Sunrise Blvd

8 am to Noon / All Year

#### Every SUNDAY

**Sacramento Central**

8th & W Streets - State Parking Lot

(Under Freeway)

8 am to Noon / All Year

**Sutter Street Farmers Market**

900 Sutter Street / Decatur

Historic Downtown Folsom

8 am to Noon / June - October

For Farmer's Markets throughout the state visit: [www.cafarmersmarkets.com](http://www.cafarmersmarkets.com)

**PERSONNEL - Sacramento Office**

Frank E. Carl, Agricultural Commissioner /  
Director of Weights & Measures  
Juli Jensen, Deputy Agricultural Commissioner  
Jackson McCarty, Deputy Agricultural Commissioner  
Ramona Saunders, Deputy Agricultural Commissioner  
Vicki Brewer, IT Analyst

**ADMINISTRATIVE SERVICES**

Teresa Adams - Administrative Services Officer  
Patty Ramme - Account Clerk III  
Paula Butler - Office Assistant II  
Priscilla West - Sr Office Assistant

**INSPECTORS**

Diana Acosta  
Lisa Arbegast  
Jennifer Berger  
Christina Evans  
Dori Kelsey  
Randy Krieg

Parminder Malhi  
Laura McCreedy  
Vince Nyvall  
Nadia Oliven  
Gafar Omar  
Morgan Poe

Jason Sanguinetti  
Lisa Rutherford  
Parissa Tehrani  
Gerry Zepeda

**Sr Ag & Stds Insp Aide**

Adrian Ramos  
Heather Downing

**SATELLITE OFFICES**

Galt Office -  
Deborah Thompson, Deputy Agricultural Commissioner

Walnut Grove Office - Karen Vietheer  
Danny Sarracino

**INSPECTORS**

**CONTACT INFORMATION**

<b>Sacramento Office</b>	4137 Branch Center Rd.	Phone: (916) 875-6603
	Sacramento CA, 95827-3897	Fax: (916) 875-6150
	Office Hours: 7:30am - 4:30pm	E-Mail: <a href="mailto:AGCOMM@saccounty.net">AGCOMM@saccounty.net</a>

<b>Galt Office</b>	520 N Lincoln Way, Suite 3	Phone: (209) 745-4109
	Galt, CA 95632	Fax: (209) 745-1128
	Office Hours: call for appointment	

<b>Walnut Grove Office</b>	14177 Market Street	Phone: (916) 776-1400
	Walnut Grove, CA 95690	Fax: (916) 776-1394
	Office Hours: call for appointment	

**Web Address**      [www.AgComm.saccounty.net](http://www.AgComm.saccounty.net)

**BOARD OF SUPERVISORS**

Roger Dickinson	District 1
Jimmie Yee	District 2
Susan Peters	District 3
Roberta MacGlashan	District 4
Don Nottoli	District 5