

**Agricultural Commissioner/  
Director of Weights & Measures**  
Juli D. Jensen, Agricultural Commissioner



**County Executive**  
Nav Gill

**Assistant County Executive**  
Nancy Newton

**County of Sacramento  
Countywide Services  
Agency**

---

## Sacramento County 2018 Pesticide Aerial Application Drift Prevention Conditions – Effective February 1, 2018

The County Agricultural Commissioner has the authority, under California Food and Agriculture Code Section 14006.6, to require a permit for a non-restricted pesticide if the pesticide cannot be used under local conditions without presenting an “undue hazard”. The following permit conditions are hereby placed on the following list of pesticides, within the specified Delta Area described below, to help mitigate the possibility of off-target movement, of these pesticides, to nearby sensitive sites. These conditions will be reviewed for effectiveness and impacts by the Agricultural Commissioner on/or near September 1, 2018.

### **Conditioned Pesticides for Aerial Applications:**

Carfentrazone (i.e. Shark®)  
Oxyfluorfen (i.e. Goal®)  
Paraquat dichloride\* (i.e. Gramoxone SL 2.0, Paraquat 3SL)  
Pyraflufen ethyl (i.e. ET Herbicide)  
Glyphosate (i.e. RoundUp)

\*The herbicides designated above with an asterisk (\*) are California Restricted Materials (3CCR 6400) and require a California Restricted Materials Permit for possession and use in all areas of the County throughout the entire year. Other Permit Conditions for these California Restricted Materials will apply, as well.

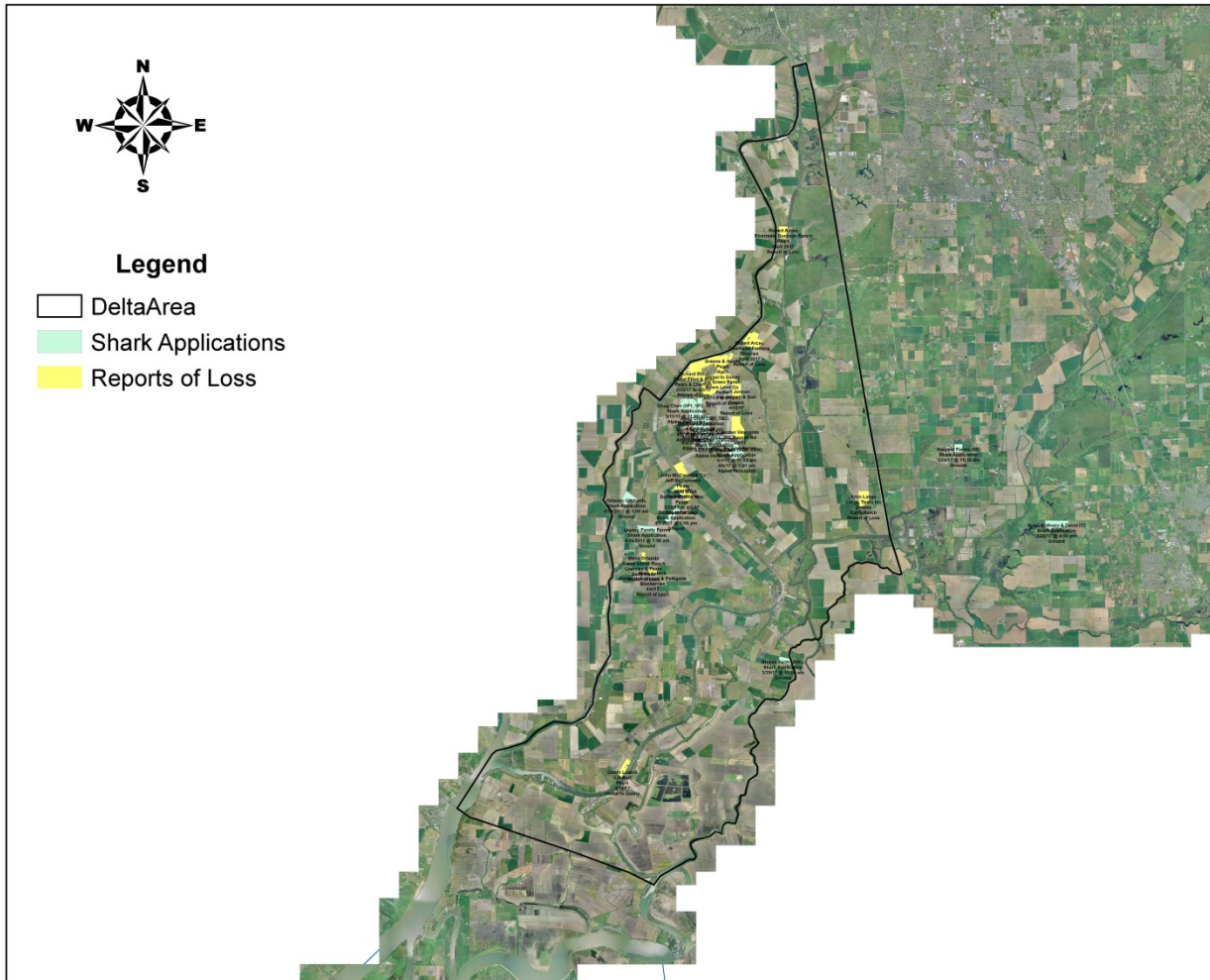
### **The following conditions shall only apply to the Delta Area described below:**

- That portion of Sacramento County bounded by a line beginning at the junction of the Sacramento River and Cache slough; thence in a northerly direction following the meanderings of Steamboat Slough to its junction with Sutter Slough near Sutter Island; thence north along Sutter Slough to its junction with the Sacramento River near Courtland; thence northerly along the Sacramento River to the southwesterly corner of the Sacramento City limits at Cosumnes River Blvd; thence north east along Cosumnes River Blvd to the junction with Interstate Highway 5; thence following Interstate Highway 5 in a southeastern direction to its intersection with the Mokelumne River; thence following the Mokelumne River in a west, southwesterly direction to its junction with the North Fork of the Mokelumne River; thence following the North Fork of the Mokelumne River in a west, southwesterly direction (Sacramento/San Joaquin County line) to its intersection with Interstate Highway 12; thence following Interstate Highway 12 in a northwesterly direction to its intersection with the Sacramento River; thence northeasterly along the Sacramento River to the point of beginning. (See Map; Attachment A)

**Conditions for Aerial Applications within described Delta Area:**

1. Aerial applications of the aforementioned pesticides are not allowed within the Delta Area (described above) between February 1<sup>st</sup> and June 1<sup>st</sup> of each calendar year, unless each specific application is approved, in writing, by the Agricultural Commissioner.
2. Between June 2<sup>nd</sup> and January 31<sup>st</sup>, the following conditions shall apply to aerial applications of the “conditioned pesticides” within the Delta Area:
  - a. The pesticides listed above, must be listed on a County Restricted Materials Permit, prior to purchase and/or use.
  - b. A Notice of Intent (NOI) shall be submitted at least 24 hours prior to the proposed application of the pesticides listed above, in accordance with the California Code of Regulations (CCR) Section 6434.
  - c. No application may begin prior to one (1) hour after sunrise and must be completed one (1) hour before sunset.
  - d. No application shall occur within or during a temperature inversion. The presence or absence of a temperature inversion shall be determined by the applicator.
    - i. If burning is prohibited as determined by the Sacramento Metropolitan Air Quality Management District (AKA: Sac Metro Air District) “Check Before You Burn” Program, aerial applications are prohibited. Information can be found at [www.airquality.org](http://www.airquality.org) or by calling 1-877-662-8765.
    - ii. If burning is “discouraged” or “legal”, as determined by the Sac Metro Air District “Check Before You Burn” Program, it is the responsibility of the applicator to determine if a local temperature inversion exists. Applicators may determine this by several methods, including but not limited to, the use of a vertical smoke column. The method shall indicate to the applicator any temperature inversions and the direction and velocity of air flow. Any use of smoke must be in accordance with any applicable local air pollution rules or regulations (see Sac Metro Air District Rule 407, 421 and 501 and California Health and Safety Code Section 41800. **Please Note: Sac Metro Air District prohibits the burning of tires, garbage, and non-organic waste**).
    - iii. Records of temperature inversion method/determination shall be maintained by the applicator for 2 years and made available to the Ag Commissioner upon request.
  - e. Applications may only occur during wind speeds of three (3) to ten (10) miles per hour, as measured from a height of four (4) feet above the ground. The applicator shall record wind speed and direction, prior to and at least every hour during the application. These wind speed and direction records shall be retained by the applicator with pesticide use records (CCR 6624) and made available to the Ag Commissioner upon request.
  - f. No application shall be made or continued if the material is unable to be confined to the target area.

# Sacramento County Permit Condition Delta Area



Map created by the Sacramento County Ag Department  
December 29, 2017

0 0.75 1.5 3 4.5 6 Miles

Please note: Larger maps are available for viewing at our office locations:

- 4137 Branch Center Road, Sacramento, CA 95827
- 425 Pine Street, Suite 1-C, Galt, CA 95632
- 14177 Market Street, Walnut Grove, CA 95690